

Redd Survey App Guide



Trout Unlimited (TU) has developed a data collection form to support our chapters and staff in conducting redd surveys. The form is accessed through the Survey123 smartphone application. This guide will detail how to download the app, access the form and complete a redd survey.

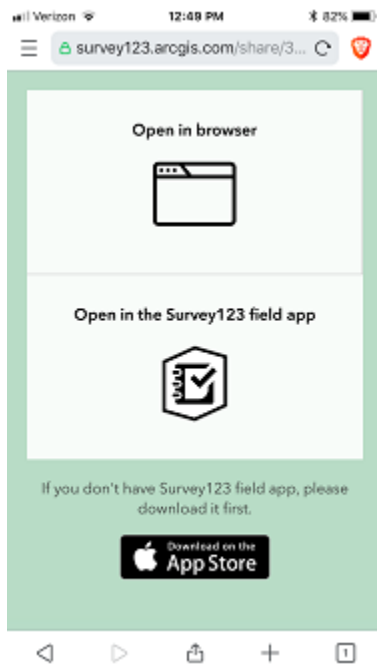
Downloading Survey 123 and Accessing the Form

1. Click on the “App Store” icon on your smartphone or tablet device.
2. Search for Survey123.



3. Download the app. You may be prompted to enter your Apple ID or Google password.
4. Once the app is downloaded, type <https://arcg.is/0u5vm> into the web browser on your device, such as Safari or Google Chrome. Do not use the Google Search app.


5. On the following screen, click “Open in the Survey123 field app”. This should open the form in your Survey 123 app. You may have a window pop up asking “Allow Survey123 to access your location while you are using the app?”. Please select yes.



6. After your first time accessing the form, you can find it by opening the Survey123 app and navigating the “My Surveys” page.


Completing a Redd Survey

Note: For a description of the data fields and survey protocols please see the TU Redd Survey Handbook or the materials provided by the redd survey coordinator.

1. If you are accessing the form through the “My Surveys” page, click “Collect” to start your survey.
2. Enter the name of the waterbody, the date of the survey and the start time of the survey. The start time should be automatically filled by clicking the data entry box. Also record the names of the survey participants, your assigned segment ID and segment description.
3. Set your survey start location by tapping the  icon on the top right corner of the map. This will locate the map pin to your current location. If you are not currently at the location where the survey began, you can relocate the map pin by tapping and dragging the map around until the pin is in the correct location.
4. Tap your choice for flow conditions and visibility conditions.

- When you identify a redd, scroll down to the “Individual Redds” section and enter the Redd ID.

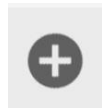


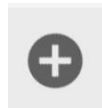
Mark the redd location by tapping the  icon, tap your choice for Redd type, Macrohabitat type, Fish on redd and type any notes.




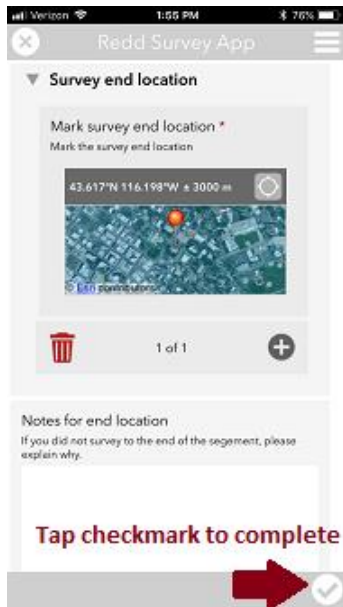
- When you identify another redd, tap the  icon and enter all the information for the redd.

The screenshot shows the 'Redd Survey App' interface on a mobile device. At the top, the status bar shows 'Verizon', '10:55 AM', and '85%' battery. The app title 'Redd Survey App' is displayed in a grey header bar with a close button on the left and a menu icon on the right. Below the header, there are three main sections: 1. 'Fish on redd? *' with a sub-question 'Is there a fish on the redd, and if so what species?' and radio button options for 'No fish', 'Brown trout', 'Steelhead', 'Coho salmon', 'Other', 'Brook trout', 'Rainbow trout', 'Chinook salmon', and 'Unknown species'. 2. 'Notes for redd' with a text input field containing 'Multiple spawning pairs on redd'. 3. A bottom navigation bar with a trash icon, '1 of 1', and an add icon. Below this is a 'Notes for survey' section with a text input field and a checkmark icon.




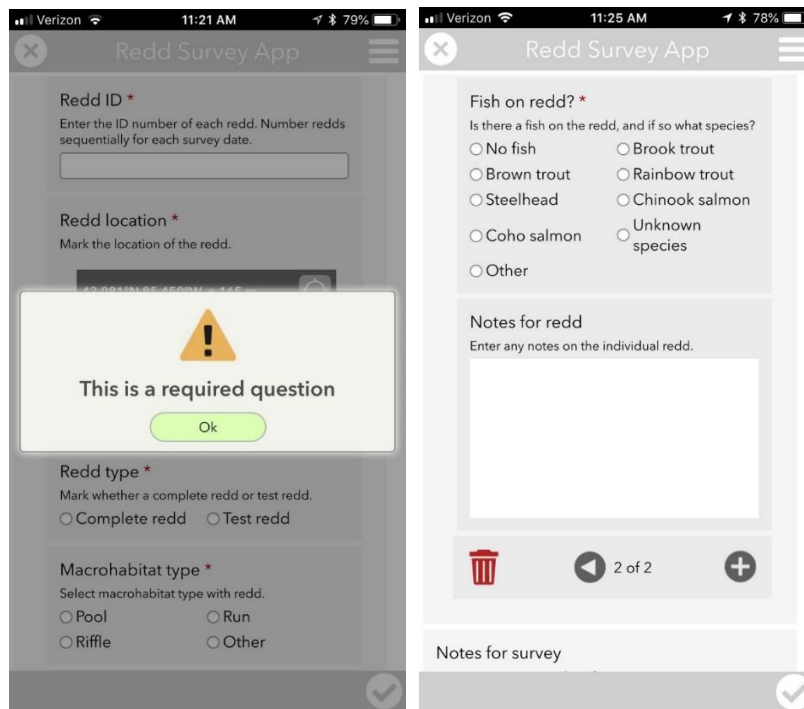
- Continue using the  icon to add more redds until you’ve completed your survey.
- Scroll down below the “Individual Redds” section and record any notes you may have for the whole survey. Document whether you completed the survey to the end of the survey segment. Record your survey end time and end location. If you were not able to survey to the end of your assigned segment, please explain why (i.e. unsafe conditions, stream went dry, etc.)

9. When you have completed your survey, click the checkmark icon  in the bottom right corner.

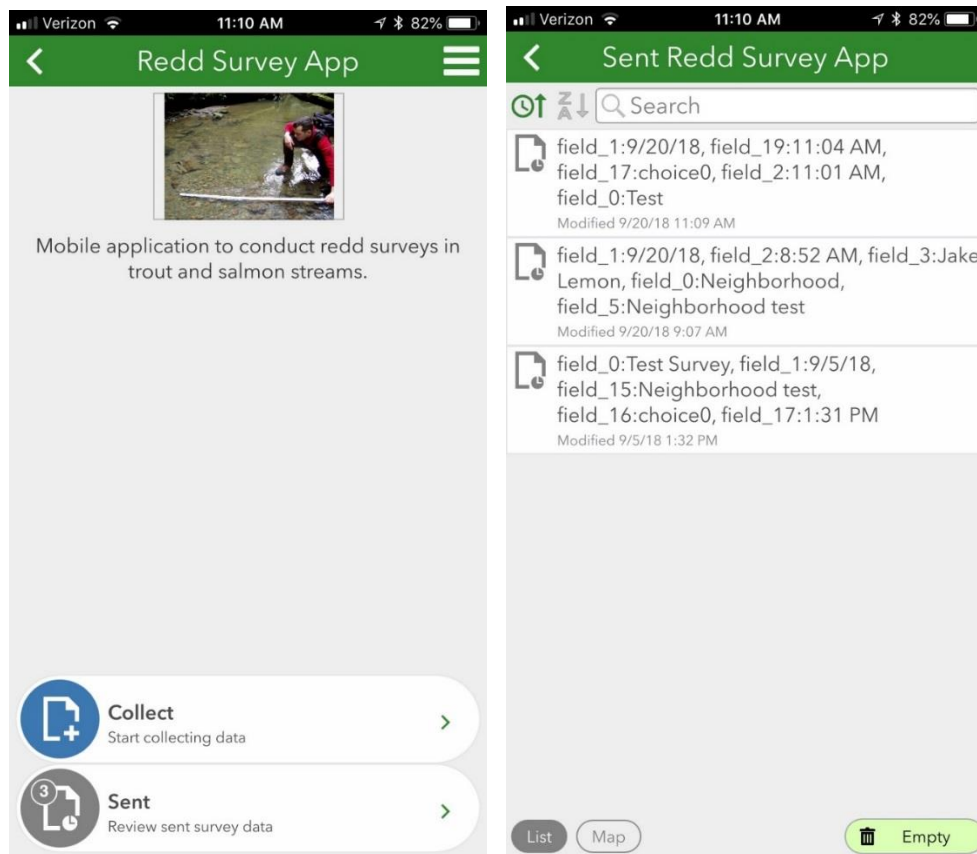


Tip: You may get a message saying “This is a required question” after clicking the checkmark. If so, please complete the required information. If the form automatically scrolls so that “Redd ID”

is at the top of your screen when displaying the message, you may have tapped the  icon after entering data for the last redd you observed. If this is the case, simply click “OK”, then scroll down and click the trash/delete icon at the bottom of the “Individual Redd” section to delete the empty redd observation. After doing so, click the checkmark.



10. A window will open saying “Survey Completed” and provide options for submitting the survey. You can click “Send Now” to upload your data to the database. After the survey is successfully uploaded you should see it in your “Sent” page.



11. If you do not have data service at the location where you complete your survey, a window will open saying “Survey Completed, Your device is offline, The survey has been saved in the outbox.” Click OK.
12. When you have cell data service or a Wifi signal, open the Survey123 App, navigate to the “Outbox” and click the survey. This will open the completed survey. Tap the checkmark then tap “Send Now” to submit your data.

